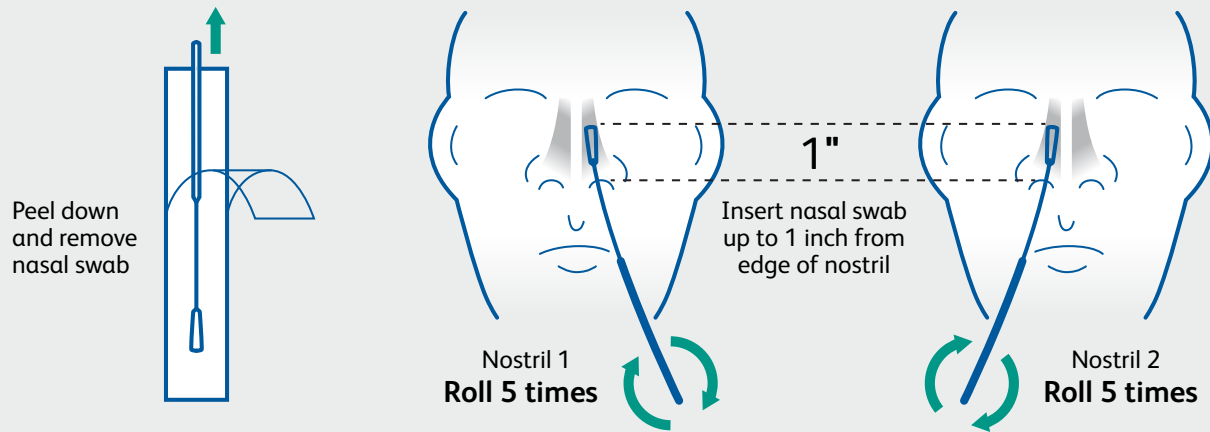


BD Veritor™ System

for Rapid Detection of SARS-CoV2

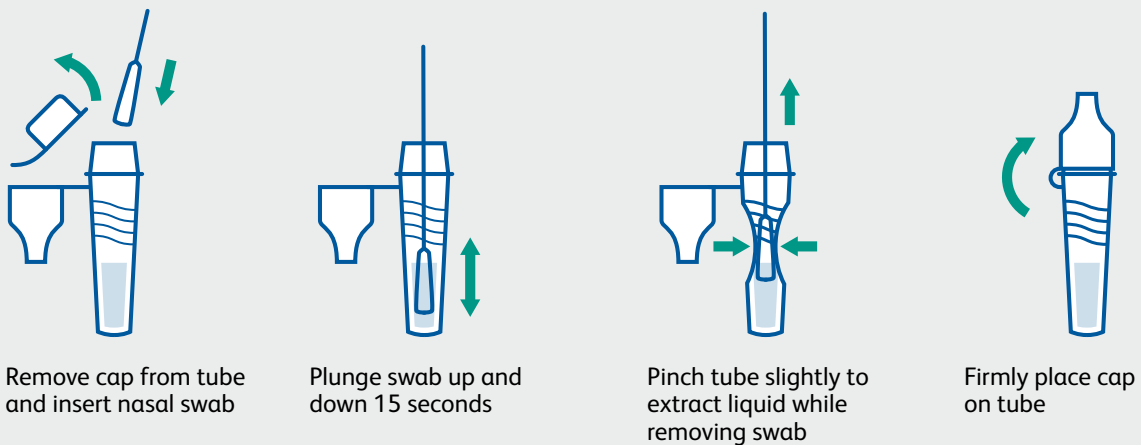
1

Sample collection



2

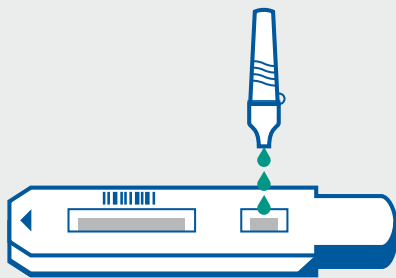
Sample preparation



Continued on back



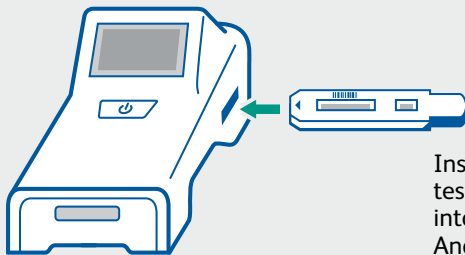
Analyze Now mode



Add 3 drops to the test strip sample well

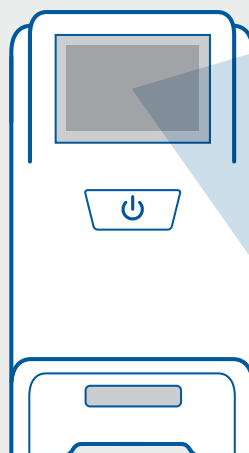


Wait 15 minutes and then press the power button



Insert the test strip into the Analyzer

View results



CoV2: -
(Negative)

or

CoV2: +
(Positive)

or

Invalid

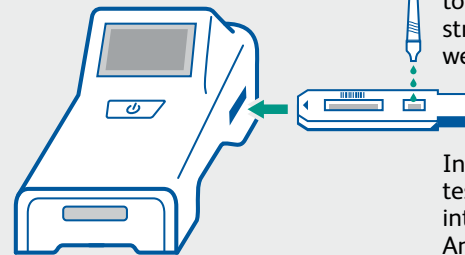
Walk Away mode



Press the power button. When prompted, double click for Walk Away mode.



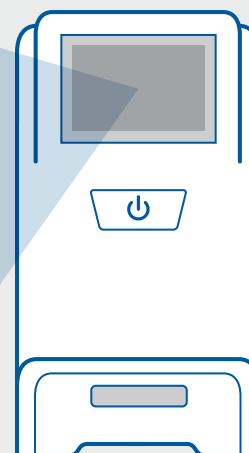
A 3 minute countdown will display



Add 3 drops to the test strip sample well

Insert the test strip into the Analyzer

View results



Dos and don'ts of sample collection

- Do collect sample as soon as possible after onset of symptoms.
- Do test sample immediately.
- Use only swabs provided with the kit.
- Refer to: Interim Guidelines for Collecting, Handling and Testing Clinical Specimens from persons for COVID-19 at <https://www.cdc.gov/coronavirus/2019-ncov/lab/guidelines-clinical-specimens.html>

BD Veritor™ System for Rapid Detection of SARS-CoV-2 instructions for use, package insert. Franklin Lakes, NJ: Becton, Dickinson and Company.
This test has been authorized for sale in Canada by Health Canada under Interim Order;
This test is only authorized for the duration of the interim order respecting the importation and sale of medical devices for use in relation to COVID-19, unless the authorization is terminated or revoked sooner;
This test has been authorized only for the detection of proteins from SARS-CoV-2, not for any other viruses or pathogens.